

GM Transport Strategy 2040 and Five Year Delivery Plan (2021-26)

January 2021

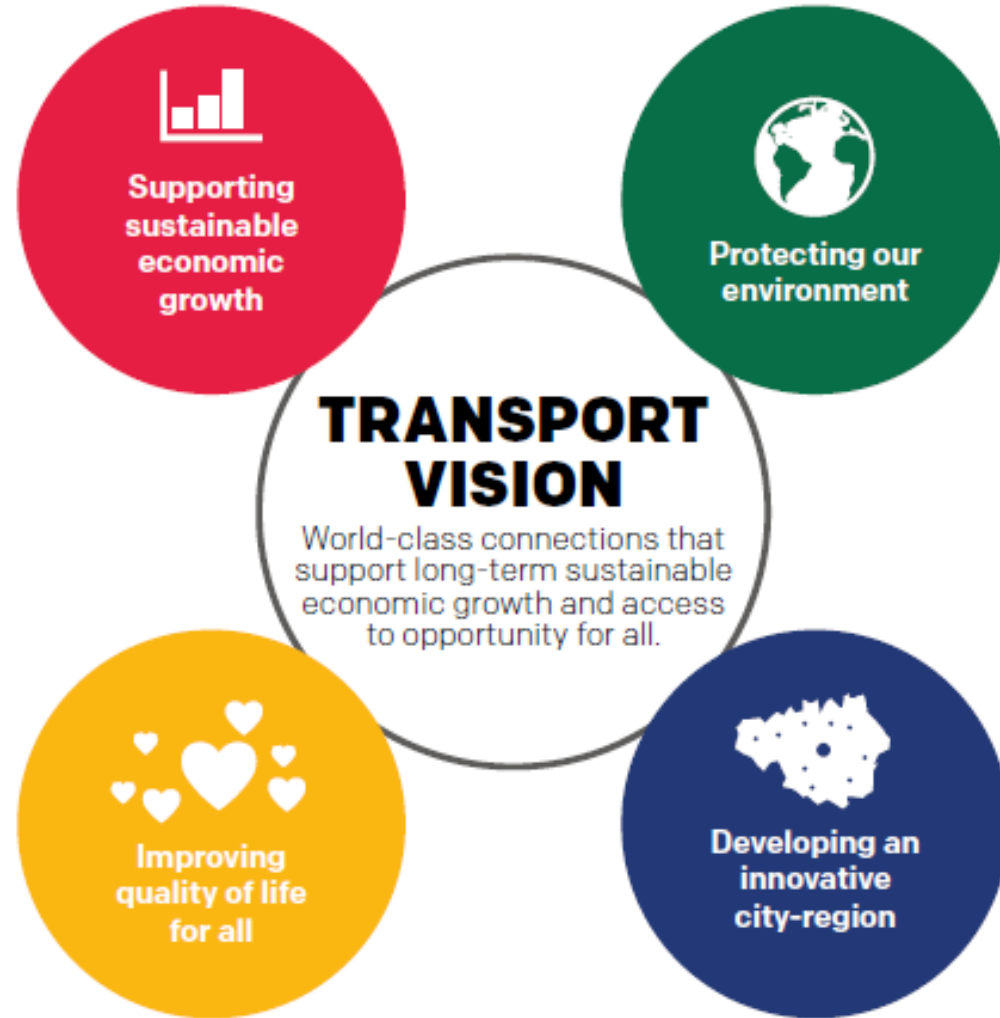




Greater Manchester Transport Strategy 2040

- GM's statutory local transport plan.
- Sets out a long-term transport policy framework.
- 2040 Vision for **'World class connections that support long-term, sustainable economic growth and access to opportunity for all'**.
- 'Light touch' policy refresh undertaken.
- Updates reflect latest position on: Our Network, 50:50 Right Mix ambition, active travel, Climate Emergency, Clean Air Plan, GM spatial planning, bus reform business case, work to develop 2040 sub-strategies (e.g. Streets for All, City Centre Transport Strategy, Rapid Transit Strategy) and emphasis on town centre regeneration.

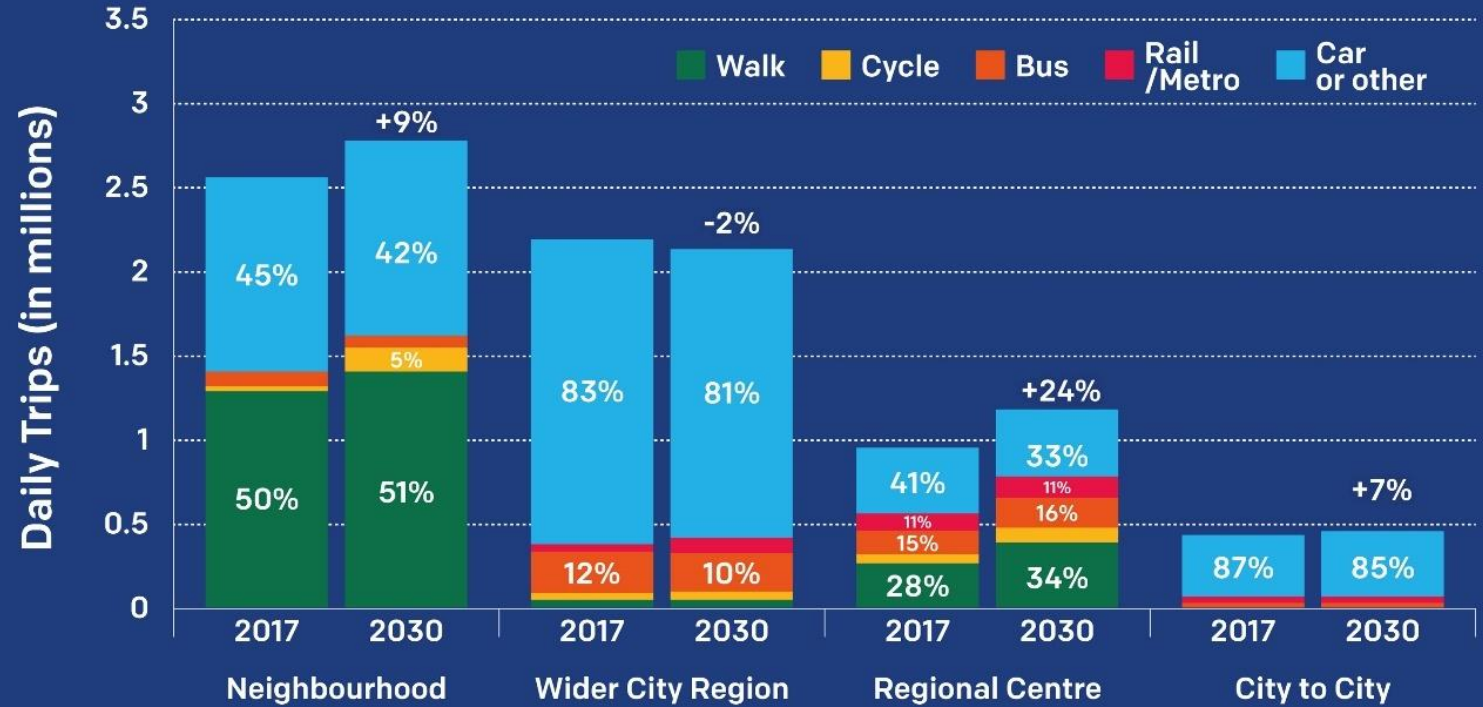
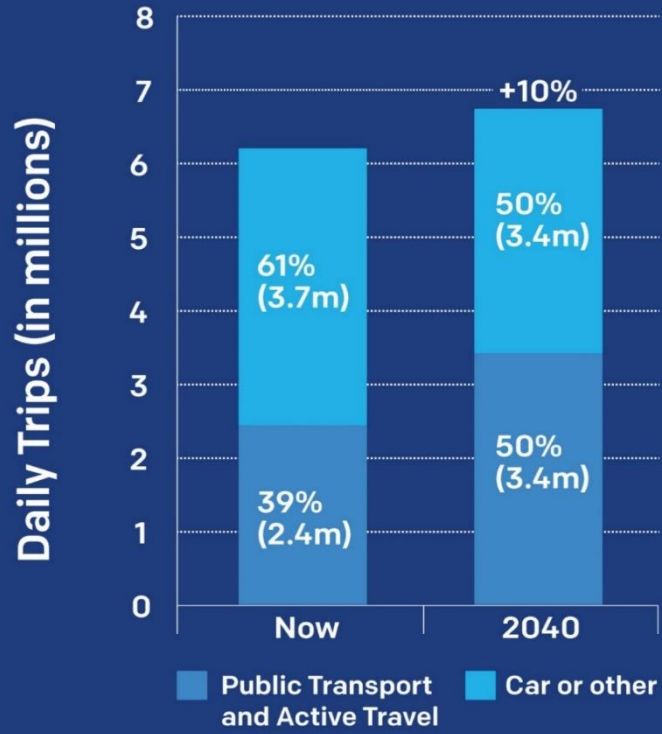
Our Vision



Our Network Principles and Spatial Themes



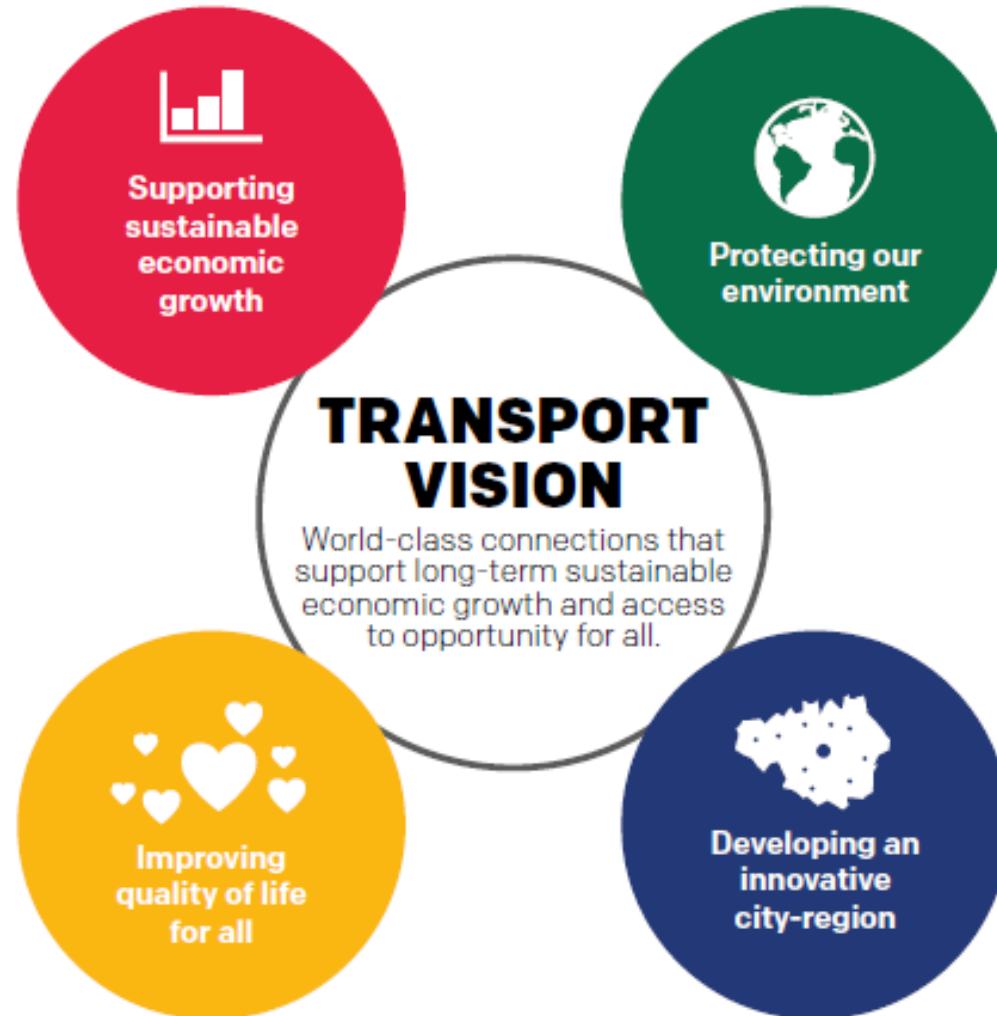
Our Right Mix Vision



Policies

Policy 6: We will work with partners to better integrate accessible travel services across Greater Manchester, to increase availability and convenience for customers.

Policy 20: We will ensure our streets are welcoming and safe spaces for all people, enabling more travel on foot, bike and public transport while creating better places that support local communities and businesses.



Policy 10: We will work with partners to reduce carbon emissions from transport, to support Greater Manchester's ambition to be net zero carbon by 2038; and to implement measures to ensure our transport system is resilient to the impacts of climate change.

Policy 29: We will expand the coverage and capacity of our rapid transit network (Metrolink, Rail and Bus Rapid Transit), to deliver improved connectivity to employment and other opportunities within the city-region.



Our Five Year Transport Delivery Plan

- First five-year pipeline for Our Network
- Aligned with GM's spatial planning priorities & framed to support COVID-19 Recovery
- Informed by extensive consultation feedback
- Developed in close collaboration with local authorities and other key stakeholders, including initial carbon review of proposed schemes
- Updated investment maps
- Sets out GM's funding and powers ask of government
- Local priorities more clearly articulated through Local Implementation Plans (LIPs)

Delivery Plan Maps

Map 1: Our Delivery Commitments

Baseline multi-modal investment (Growth Deal, Transforming Cities Fund, Clean Air Plan, Roads Investment Strategy, Strategic Rail and other) and reforms in GM transport system

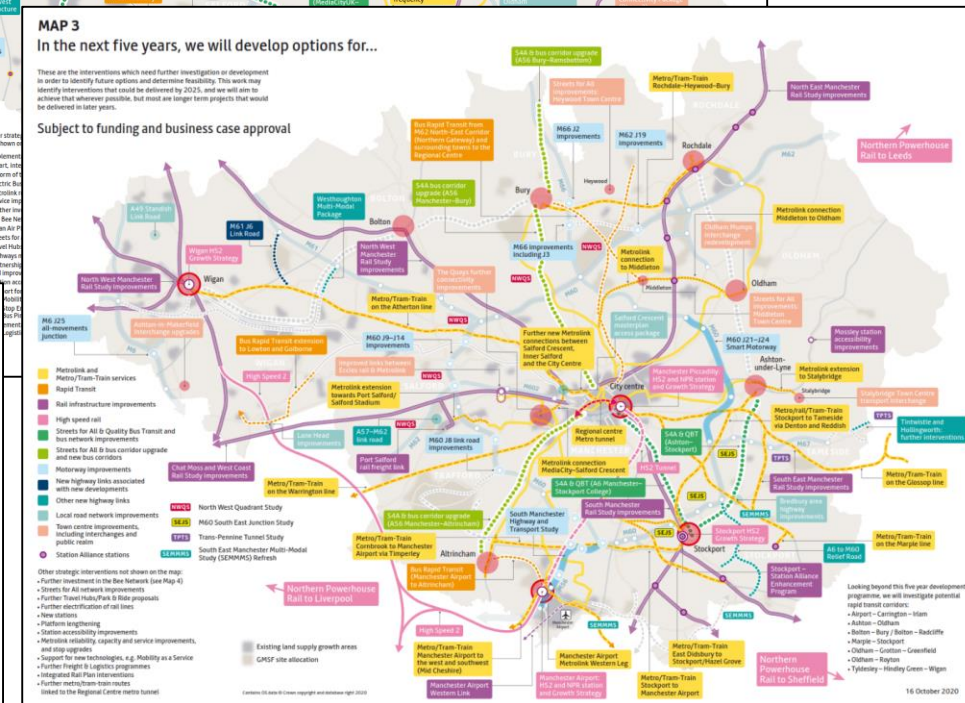
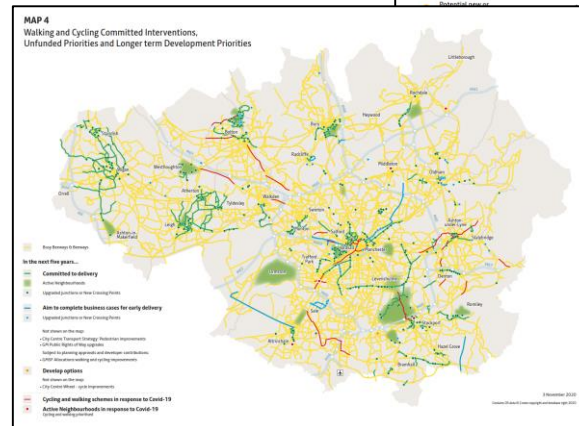
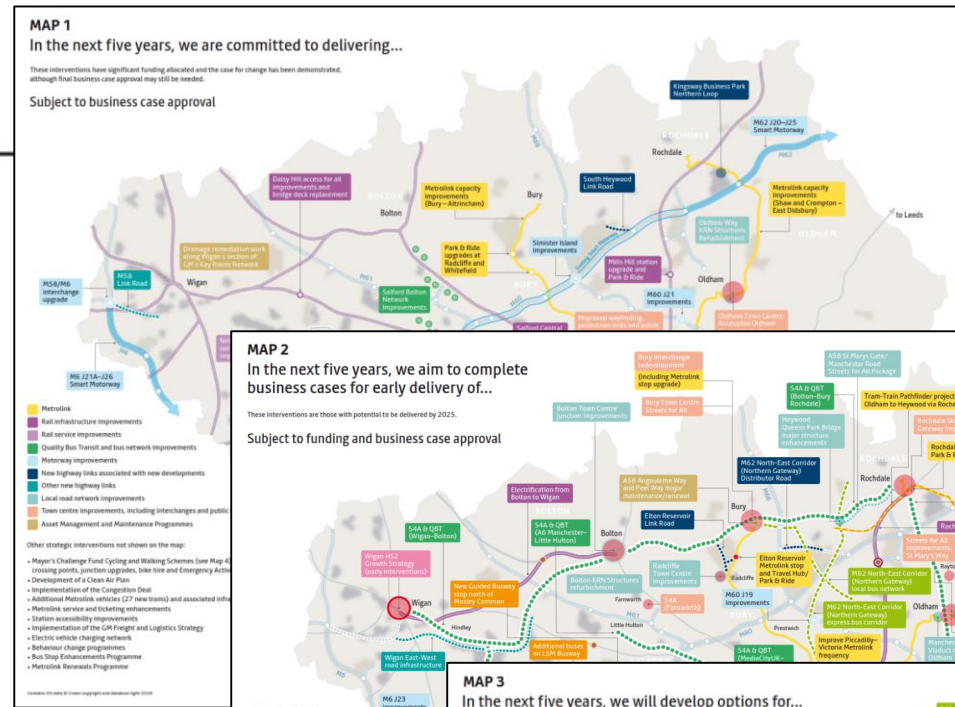
Map 2: Our 5-Year Investment Plan

Capital investment programme for GM with strong focus on town centres, bus network, local rail and tram enhancements, EV charging and GM Bee Network

Map 3: A Development Plan for the Future

Long-term development programme of bus rapid transit, tram-train and HS2/NPR initiatives

Map 4: Walking and Cycling Interventions



MAP 2

In the next five years, we aim to complete business cases for early delivery of...

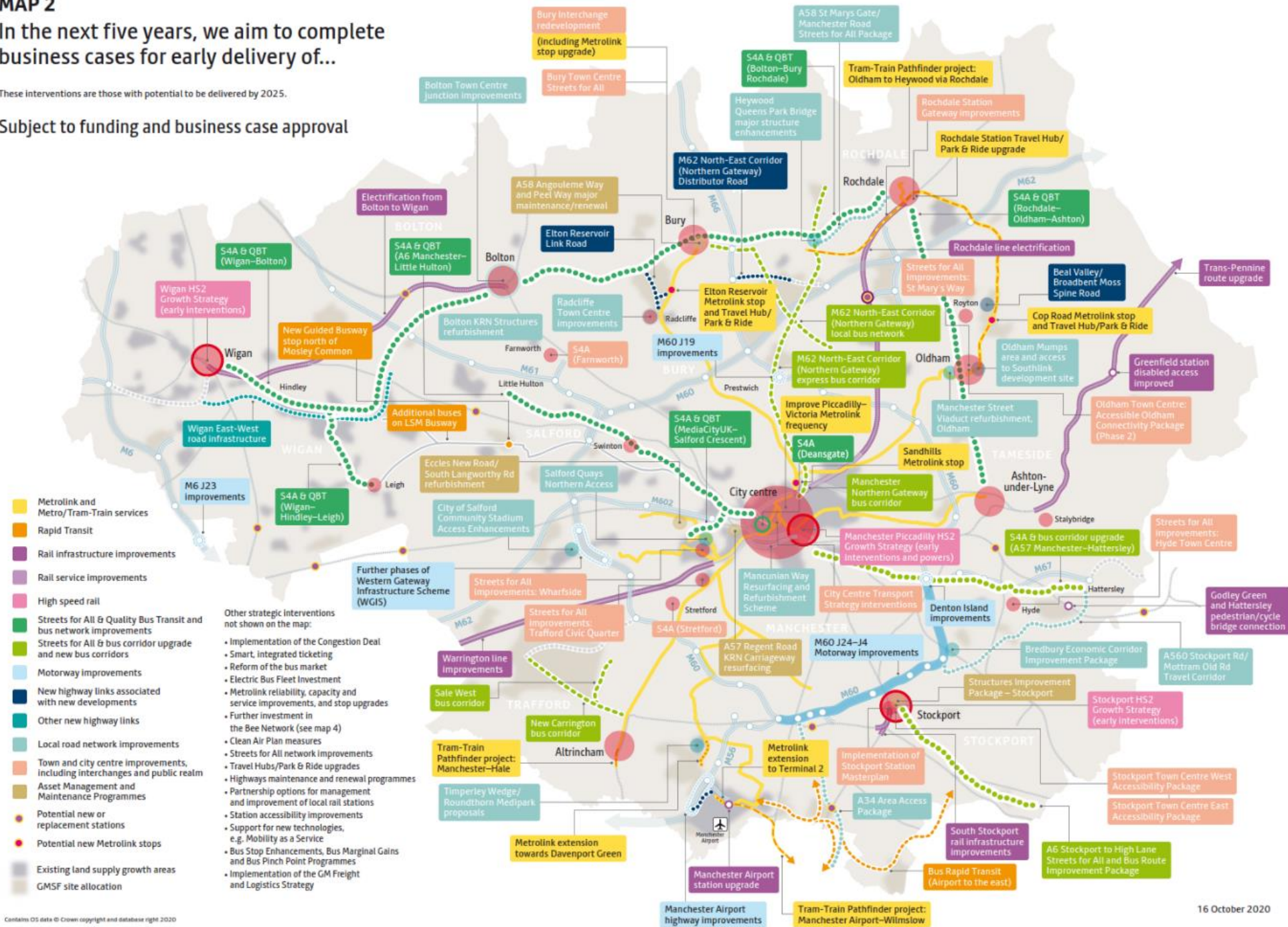
These interventions are those with potential to be delivered by 2025.

Subject to funding and business case approval

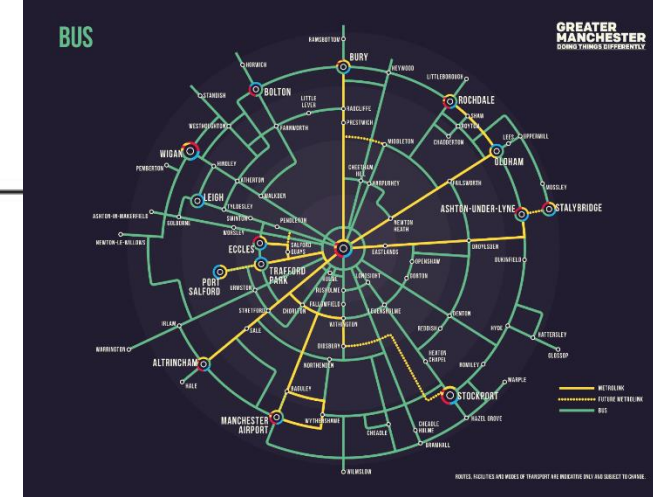
Delivery Plan Maps

Map 2: Our 5-Year Investment Plan

Capital investment programme for GM with strong focus on town centres, bus network, local rail and tram enhancements, EV charging and GM Bee Network



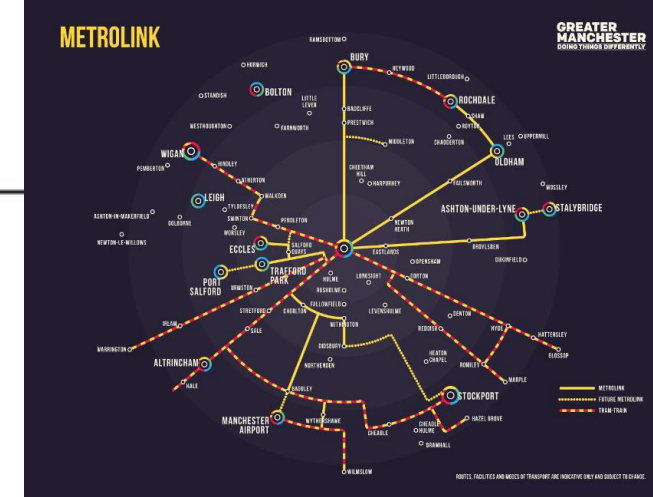
Our Bus



Over the next five years we aim to develop an ambitious investment programme to ensure that buses play their full role in delivering a more integrated and sustainable transport system. This will include:

- **Developing proposals for a 95-mile network of Quality Bus Transit corridors across Greater Manchester;**
- **Developing proposals for bus rapid transit services; and**
- **Measures to tackle bus pinch points on the highway network.**
- **Continued consideration of Bus Reform and Our Pass;**
- **Development of cleaner bus vehicles and improved bus services to serve new housing and employment sites.**

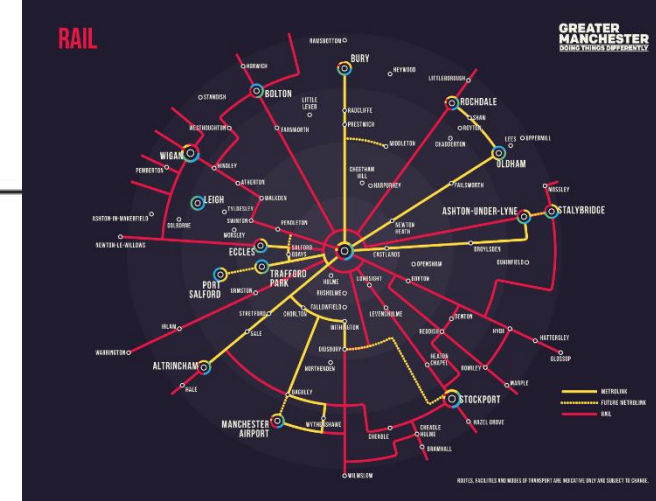
Our Metrolink



Over the next five years we plan to improve reliability, capacity, and customer experience on Metrolink. We aim to achieve this through:

- **Investing in and renewing our Metrolink fleet assets;**
- **Network capacity and resilience enhancement;**
- **Enhanced stop facilities and improved access, new stops to support development; and**
- **Exploring opportunities for new Metrolink connections, including testing the feasibility of tram-train on existing rail lines.**

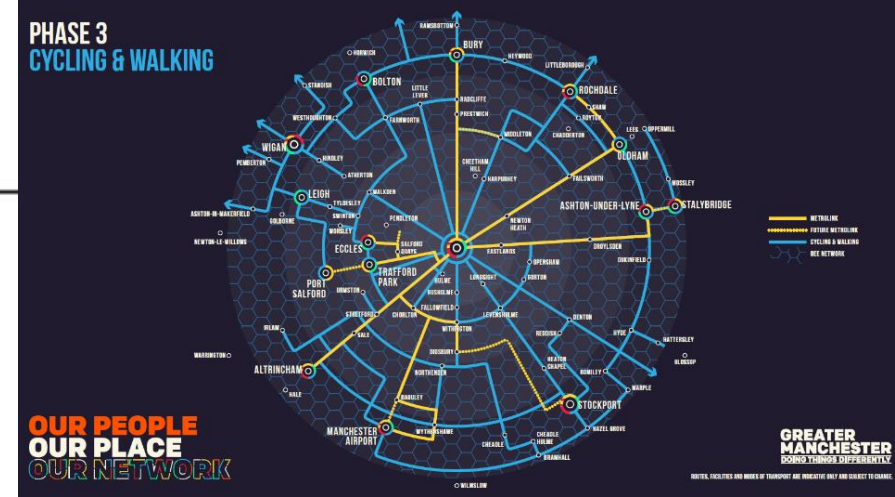
Our Rail



Over the next five years, working with rail industry partners, we plan to progress a number of key priorities for GM and continue to develop long-term, large-scale projects that will improve the reliability, capacity and customer experience of rail travel through:

- **Central Manchester Rail Network enhancements;**
- **Stockport area rail infrastructure improvements;**
- **A programme of rail improvements on key rail corridors such as the Warrington rail (CLC) line;**
- **Station enhancements (access for all and platform lengthening);**
- **Train lengthening and introduction of new rolling stock;**
- **Development of new stations proposals; and**
- **HS2 / NPR (Northern Powerhouse Rail) including growth strategies at Piccadilly, the Airport, Stockport and Wigan.**

Our Streets



Over the next five years we aim to invest in the GM highway network to deliver change that meets the aims of Streets for All. This will include:

- **Opening 420 miles of the Bee Network;**
- **Implementation of town centre Streets for All schemes;**
- **Realisation of the City Centre Transport Strategy through delivery of streets for all and public realm enhancements;**
- **Quality Bus Transit Corridors on bus routes across GM, including connections between Rochdale, Oldham and Ashton;**
- **Implementation of a Greater Manchester Bike Hire scheme**
- **Delivery of £17m of (Emergency) Active Travel Measures across Greater Manchester.**

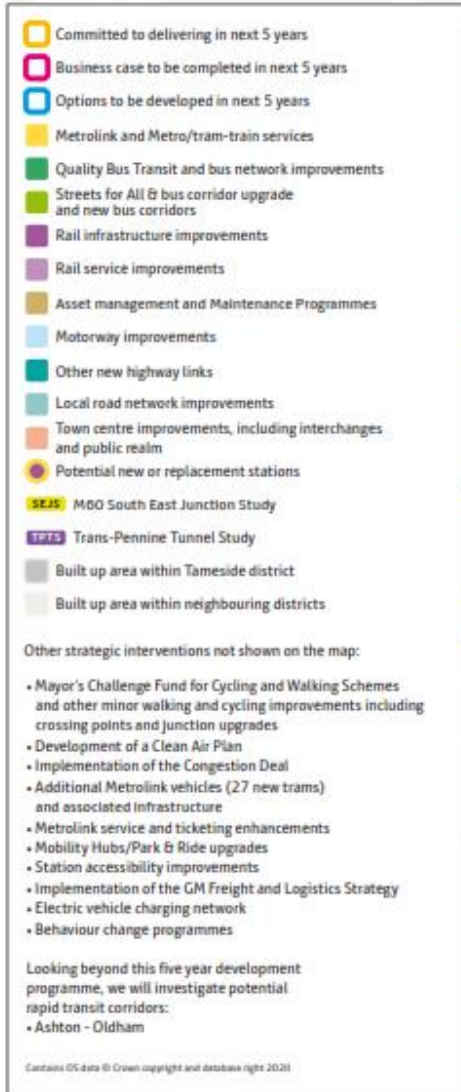
Our Integrated Network

Over the next five years we aim to invest in developing and delivering interventions in the following key areas:

- **Clean Air Plan;**
- **Carbon Reduction measures;**
- **New multi-modal interchange facilities and travel hubs, including in Bury.**
- **Innovation - future mobility technologies that support the 2040 Transport Strategy Network Principles;**
- **Fares & Ticketing - Further phases of Greater Manchester's smart ticketing;**
- **Behaviour Change – targeted activities through established programmes;**
- **Safety and security – road safety measures and programmes to make our transport network safe and secure for all users.**

Delivery Plan Map - Tameside

TAMESIDE DELIVERY MAP 1, 2 AND 3



Legend:

- Committed to delivering in next 5 years
- Business case to be completed in next 5 years
- Options to be developed in next 5 years
- Metrolink and Metro/tram-train services
- Quality Bus Transit and bus network improvements
- Streets for All & bus corridor upgrade and new bus corridors
- Rail infrastructure improvements
- Rail service improvements
- Asset management and Maintenance Programmes
- Motorway improvements
- Other new highway links
- Local road network improvements
- Town centre improvements, including interchanges and public realm
- Potential new or replacement stations
- SEJS: M60 South East Junction Study
- TPTS: Trans-Pennine Tunnel Study
- Built up area within Tameside district
- Built up area within neighbouring districts

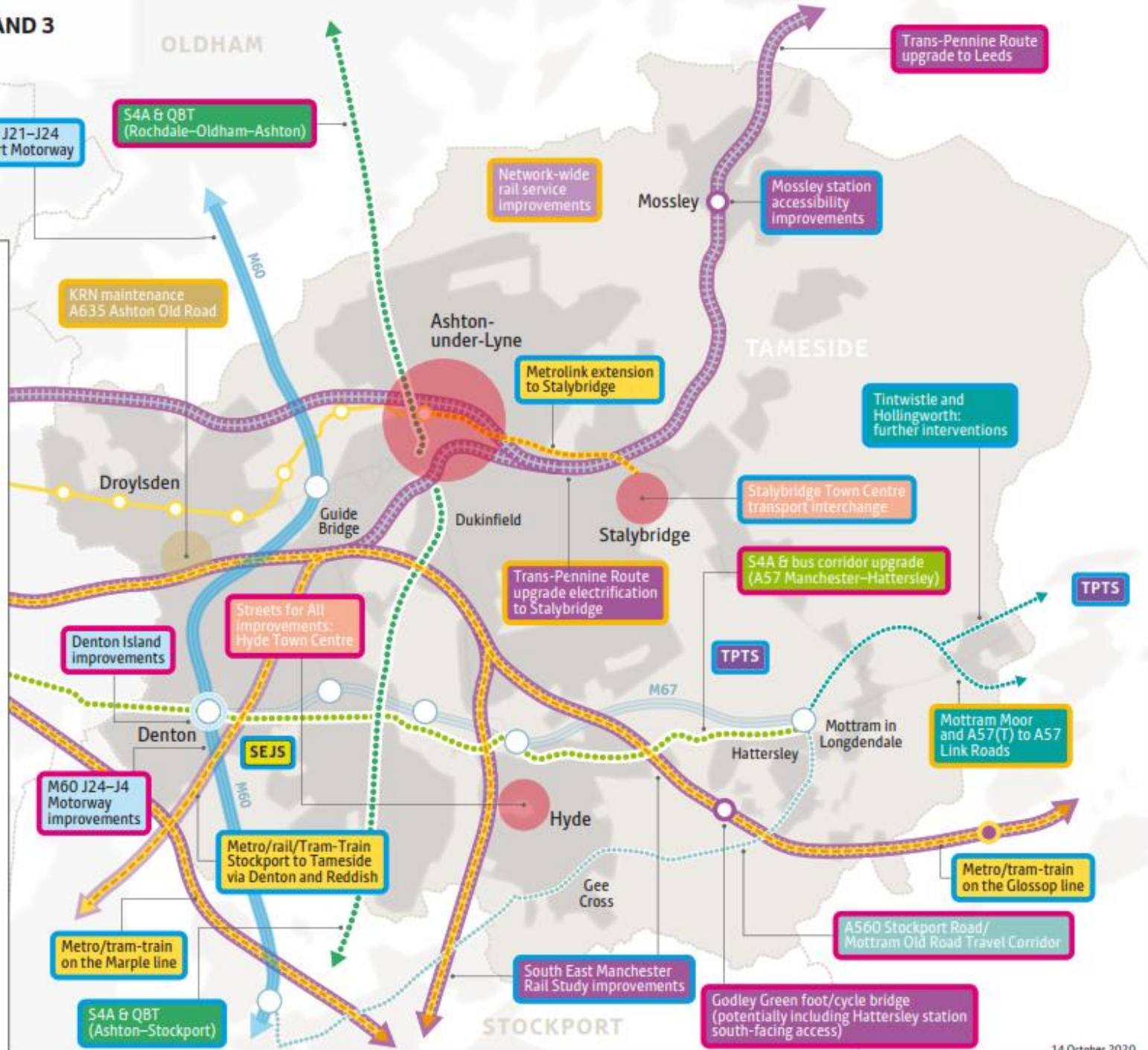
Other strategic interventions not shown on the map:

- Mayor's Challenge Fund for Cycling and Walking Schemes and other minor walking and cycling improvements including crossing points and junction upgrades
- Development of a Clean Air Plan
- Implementation of the Congestion Deal and associated infrastructure
- Additional Metrolink vehicles (27 new trams) and associated infrastructure
- Metrolink service and ticketing enhancements
- Mobility Hubs/Park & Ride upgrades
- Station accessibility improvements
- Implementation of the GM Freight and Logistics Strategy
- Electric vehicle charging network
- Behaviour change programmes

Looking beyond this five year development programme, we will investigate potential rapid transit corridors:

- Ashton - Oldham

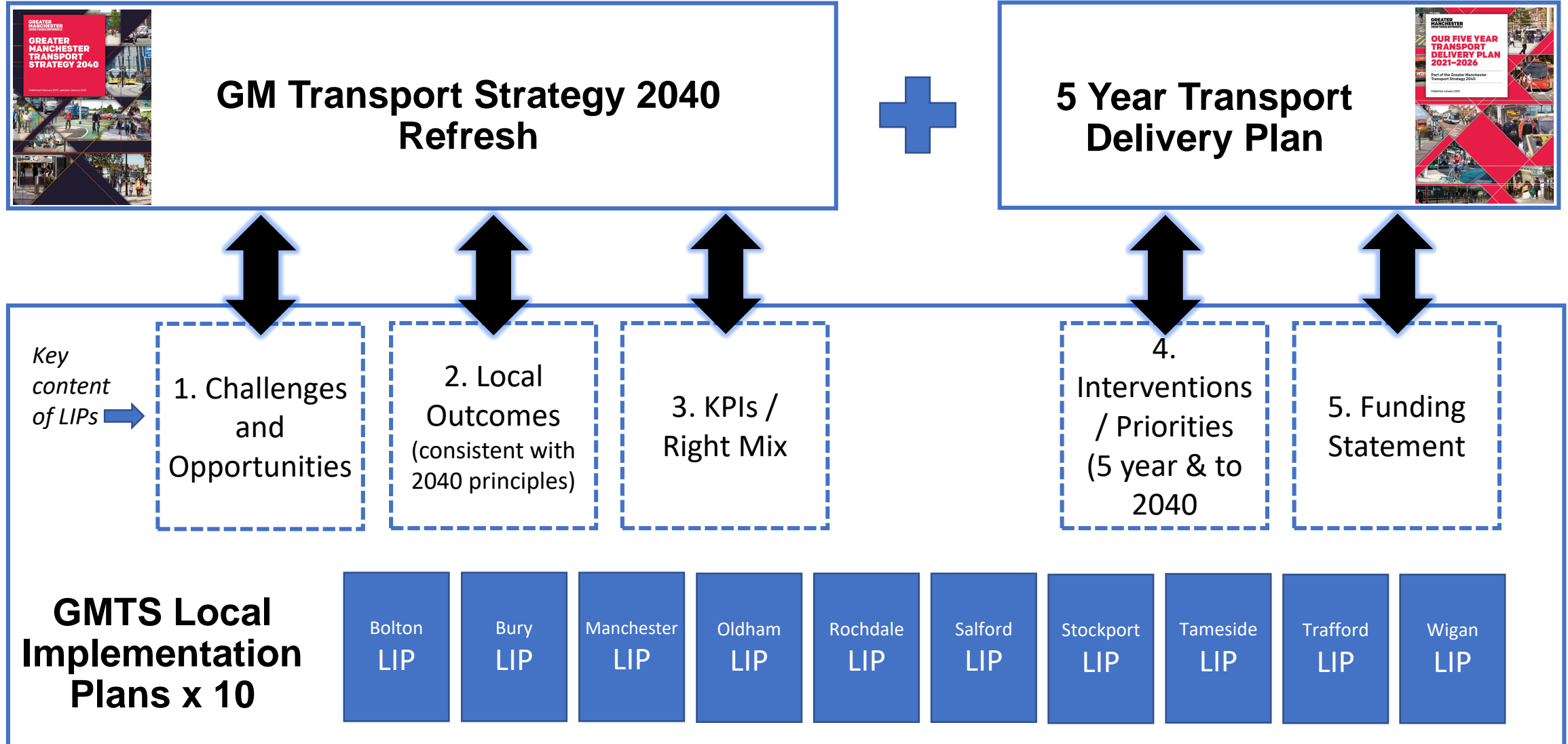
Contains OS data © Crown copyright and database right 2020



Local Implementation Plans (LIPs)

- Ten Local Implementation Plans (LIPs) – one for each local authority - will be appended to Our Five Year Delivery Plan.
- ‘Live’ documents.
- The LIPs are designed to:
 - Complement the 2040 Transport Strategy and Our Five Year Delivery Plan: focus on **supporting local trips within neighbourhoods and to local centres**;
 - Summarise key local transport issues and opportunities in each local authority, providing an **added layer of local detail**; and
 - Support **Right Mix** and **carbon reduction targets**, alongside wider GM and council strategy and policy documents (e.g. **Local Plans, town centre masterplans, GM Clean Air Plan**).

2040 Transport Strategy Documents



- Final local authority and GM approvals through January - publication in February
- Transport Pipeline – GMIP
- Funding

